

cardiolife

Defibrillators TEC-8300K series

It's all seamless



Fighting Disease with Electronics

 **NIHON KOHDEN**

The one you need in an emergency



ECG, SpO₂, NIBP, MULTI connectors, Pacing*

* Pacing available with TEC-8332K/8352K



Pre-hospital

Out-of-hospital 12-lead ECG acquisition and data transmission

In the resuscitation guidelines, the performance of out-of-hospital 12-lead ECGs with transmission or interpretation is regarded as an important key component of STEMI (ST-segment myocardial infarction) care system.

TEC-8300K series provides the solutions that enable simple and easy 12-lead ECG acquisition and data transmission to remote facilities. These solutions contribute to faster activation of cath lab and faster access to primary PCI, which helps door-to-balloon time reduction.

For intensive treatment and advanced life support



ICU

Intensive care for post-cardiac arrest

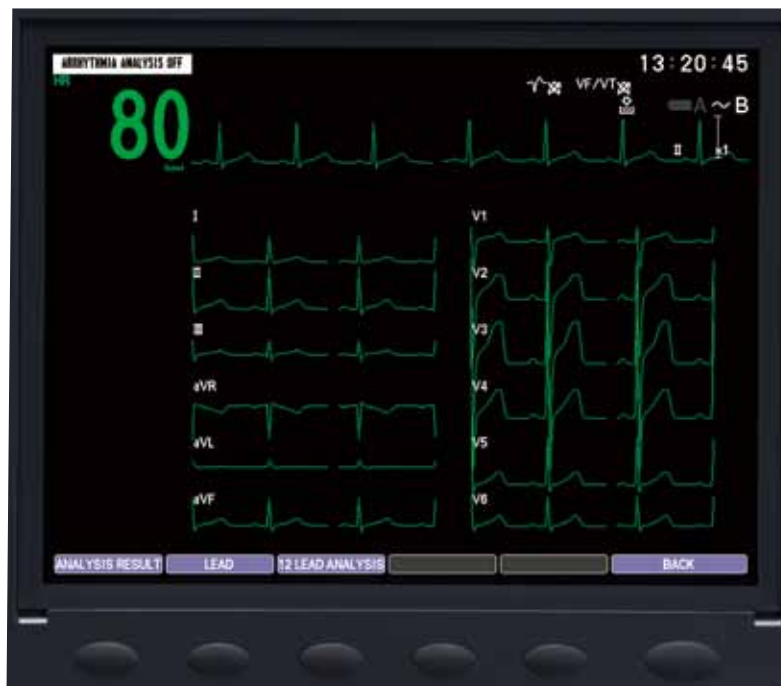
As one of the key post-cardiac arrest care, intensive patient monitoring is necessary.

TEC-8300K series with MULTI connector provides simultaneous ECG, SpO₂, CO₂, IBP, NIBP, Temperature measurements. These features and functions immediately alert you if patient status is changed and help you faster and more accurate decision making.

Newly-added NIHON KOHDEN's original "ec1" arrhythmia analysis algorithm on TEC-8300K also help accurate patient monitoring. In addition to that, TEC-8300K provides intuitive and user-friendly AED function and external pacing for sudden patient status change.



12-lead transmission system



 Bluetooth®



Send 12-lead ECG from a TEC-8300K defibrillator to mobile devices via Bluetooth module (QS-831V).

Send 12-lead ECG to the hospital by e-mail.

The data can be viewed at the hospital on a PC with ECG Viewer software.

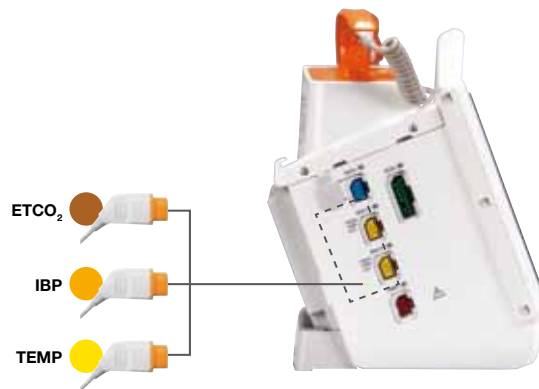
A Bluetooth module is needed to transfer the ECG data to mobile devices. According to each country law, Bluetooth can be requested the registration.

The Bluetooth word mark and logo are registered trademarks owned by the Bluetooth SIG, Inc.

Smart Cable system

Smart Cable technology miniaturizes circuits found in traditional modules and embeds that circuitry into the cable.

When you plug a Smart Cable into a MULTI connector, it automatically detects the type of parameter and starts measuring.



Easy airway management with cap-ONE

CO₂ monitoring is the most effective parameter for the detection of respiratory incidents.

Nihon Kohden's innovative mainstream CO₂ sensor, cap-ONE, provides CO₂ monitoring for both intubated and non-intubated patients.

No complicated setting and warm-up time is required so you can obtain CO₂ quickly and accurately.

cap-ONE
ORAL NASAL EXPIRATION

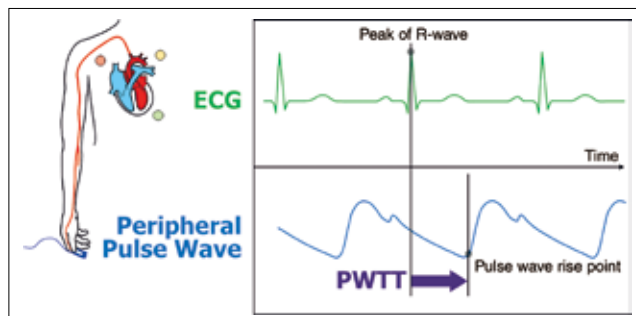


Redefining quality of care ~ Non-invasive hemodynamics monitoring ~



esCCO
— Continuous Cardiac Output —

Nihon Kohden is redefining Quality of Care with new non-invasive technologies like PWTT (pulse wave transit time) and esCCO (estimated continuous cardiac output) by introducing volumetric information to all care levels. esCCO represents a care enhancing and economic solution with no additional running costs or accessories.



Pulse Wave Transit Time derived from ECG and pulse oximetry signal



Reliable biphasic technology

TEC-8300K series provides low energy biphasic waveform defibrillation.

Biphasic waveform defibrillation requires lower energy than the conventional monophasic defibrillation and causes less damage to the myocardium. Biphasic technology demonstrates superior results to save the patient from sudden cardiac arrest and Nihon Kohden's unique ActiBiphasic technology provides an improvement over most conventional biphasic circuits by employing an original T-circuit. In conventional biphasic circuits, when impedance is high, the pulse width becomes wider which reduces the efficiency of defibrillation. Nihon Kohden's T-circuit actively controls the shape of the second phase waveform to maintain constant pulse width.

ActiBiphasic

Nihon Kohden's advanced technology



Highly accurate ec1 arrhythmia analysis

Nihon Kohden's ec1 arrhythmia analysis algorithm improves accuracy of arrhythmia analysis and reduce false alarms by 80%.

Some functions are limited on TEC-8300 series. Contact your Nihon Kohden representative for details.

Display examples



● Built-in recorder

A thermal array recorder records various defibrillation information.



● Self-test indicator

TEC-8300K series have a self check function with daily and monthly test.



● Connector

Paddles (external paddles, internal paddles and disposable pads) can be easily changed with one connector.



Main units

- TEC-8321K: ECG, AED, 12-lead ECG, SpO₂, MULTI connector* (1)
- TEC-8322K: ECG, AED, 12-lead ECG, SpO₂, temperature, MULTI connector* (2)
- TEC-8332K: ECG, AED, 12-lead ECG, SpO₂, temperature, MULTI connector* (2), pacing
- TEC-8342K: ECG, AED, 12-lead ECG, SpO₂, temperature, MULTI connector* (2), NIBP
- TEC-8352K: ECG, AED, 12-lead ECG, SpO₂, temperature, MULTI connector* (2), NIBP, pacing

* MULTI connector for CO₂, IBP and temperature

Major options

- Battery, SB-831V [X077](#)
- Battery charger, SB-801V
- AC/DC module, SC-831V
- External paddle, ND-831V
- External paddle holder, DP-831VK
- Disposable pads, [H329](#) / [H330](#)
- Disposable pads adapter cable, JC-865V [K342B](#)
- Bluetooth module, QI-832V
- SD card, [Y154D](#)
- Software for arrhythmia analysis, QS-831V
- Viewer software, QP-551VK
- Cart, KD-831V
- In-vehicle wall mount, KG-831V
- Bed rail hook, YZ-047H4

Specifications

Dimensions :	334(W) x 362(H) x 262(D)
Weight :	TEC-8321/TEC-8322/TEC-8332: 6.8 kg (including one battery pack) TEC-8342/TEC-8352 : 7.0 kg (including one battery pack)
Display :	8.4 inch color LCD
Energy Selection :	2 – 270J
Operating time :	480 min continuous monitoring (with 2 batteries) 200 discharges at 270J 180 min fixed mode pacing (180 pulse/min, 200mA)
Charging time :	within 4 sec to 200J (in both AC and full charged battery)

This brochure may be revised or replaced by Nihon Kohden at any time without notice.



NIHON KOHDEN

NIHON KOHDEN CORPORATION

1-31-4 Nishiochiai, Shinjuku-ku, Tokyo 161-8560, Japan

Phone +81 (3) 5996-8036 Fax +81 (3) 5996-8100

www.nihonkohden.com