

# EEG-1200/ICU with aEEG trend

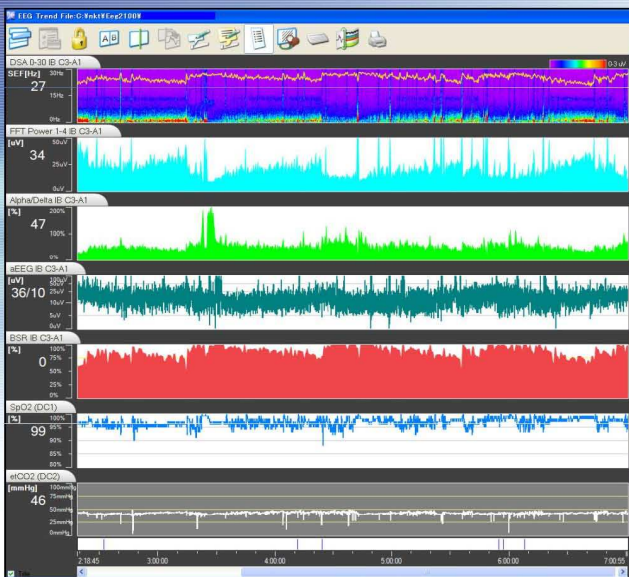


## EEG-1200/ICU

- Touchscreen function
- 38-channel amplifier with SpO<sub>2</sub>, CO<sub>2</sub>, Standard-DIN-connectors
- aEEG electrode inputs have a colored mark according to the electrode lines
- Video-Option, Sleep Software-Option
- Also usable as full routine EEG-System

 **NIHON KOHDEN**  
EUROPE GmbH

## Trend Software Features



- **aEEG**
  - Displays the Amplitude Integrated EEG (maximum and minimum values of EEG data)
- **BSR**
  - Displays Burst Suppression Ratio
  - Also available: IBI (Inter Burst Interval) and BPM (Burst per Minute)
- **DSA**
  - Displays the FFT analysis results as a Density Spectral Array
  - Optional display of Peak or Edge Frequency
- **FFT Power**
  - Displays the FFT analysis results as FFT Power Graph
- **Asymmetry**
  - Shows the asymmetry of DSA and FFT power by displaying the deviation of left and right channels
- **External Input**
  - Displays external inputs (SpO<sub>2</sub>, EtCO<sub>2</sub>)

 **NIHON KOHDEN**  
EUROPE GmbH